

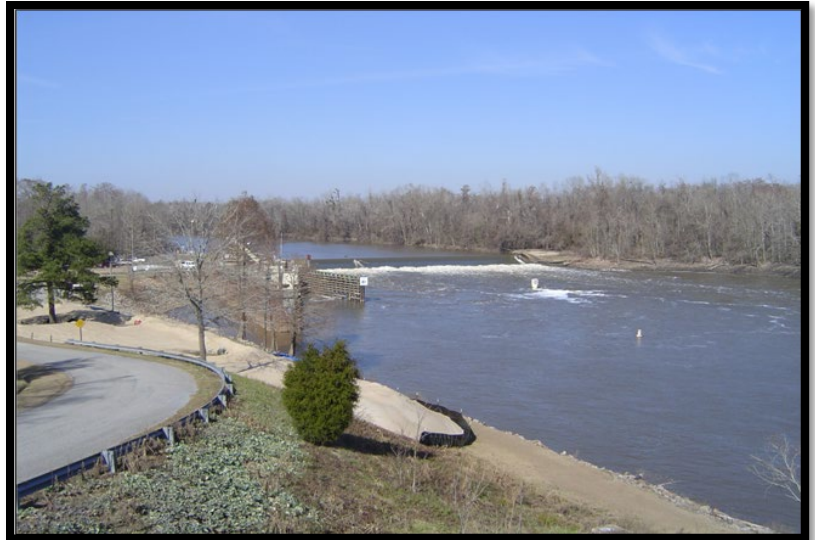


US Army Corps
of Engineers
Wilmington District

Cape Fear River above Wilmington, NC (Navigation) (O&M)

FY 2022 Planned Actions:

- Operate and maintain structures and recreation facilities
- Received \$6.5M in IIJA funding for rehabilitation of all three lock chambers and collapsing esplanade area at W O'Huske L&D.



CONGRESSIONAL DISTRICT: NC 7, 9

DATE: 18 APRIL 2022

1. **AUTHORIZATION:** River and Harbor Act of 1910, 1934, 1935, 1965; and Section 4 of the Flood Control Act of 1944.
2. **PROJECT DESCRIPTION:** The project consists of a channel 25 feet deep and generally 200 feet wide, to a basin, 400 feet wide, 550 feet long, at Navassa, 2.9 miles; then a 12 feet deep, 140 feet wide, to mile 30 at Acme, with five channels cutoffs, 12 feet deep, 150 feet wide; then a channel of 8 feet deep and varying widths to Fayetteville, 111 miles, including three locks and dams in Bladen County; and recreation facilities at the locks and dams.
3. **FEDERAL FUNDING ALLOCATION FOR FY 2021:** \$496,000.
4. **FY 2022 PRESIDENT'S BUDGET:** \$480,000 Final Bill: \$480,000. Funds are being used to provide for caretaker status activities including required anadromous fish lockages and related activities to ensure lock operations. Infrastructure Investment and Jobs Act (IIJA) funds in the amount of \$6,500,000 are being used for the rehabilitation of all three lock chambers (\$6,000,000) and the rehabilitation of the collapsing esplanade area at William O'Huske Lock and Dam (\$500,000).
5. **FY 2022 WORK PLAN:** TBD.

PROJECT INFORMATION – Cape Fear River above Wilmington, NC (Navigation, O&M) –
Continued

6. **FY 2023 PRESIDENT'S BUDGET:** \$484,000. Funding will be used provide for caretaker status activities including required anadromous fish lockages and related activities to ensure lock operations.

7. **OTHER INFORMATION:** The Cape Fear River locks and dams were constructed to ensure a navigable channel for commercial barges from Wilmington to Fayetteville. In recent decades, this commercial traffic has ceased operations. The annual maintenance expenditure by USACE is about \$500,000 annually.

Bladen County and the Cape Fear River Partnership have expressed an interest in designing and constructing additional fish passage structures at locks and dams #2 and #3 and are currently in discussions with USACE, Wilmington District about a Section 408 review for potential fish passage projects at Locks #2 and #3.